

- Key**
- Order Limits
 - Cable Corridor Sections
 - Order Limits 500m Buffer
- Community Receptors**
- ⊙ Ambulance Station
 - ⚕ GP/ Health Facility
 - 🏠 Care Home
 - 🏥 Hospital
 - ⊕ Cemetery
 - ⚙️ Leisure Facilities
 - ✝️ Church
 - 📖 Library
 - ★ Dentist
 - Children's/ Education Facility
 - ✖️ Fire Station
 - Tourist Facility (Location)
 - Tourist Facility (Area)

The Infrastructure Planning (Applications: Prescribed Forms and Procedures) Regulations 2017 – Regulation 5(2)(a)

01	11/11/2019	JT	FIRST ISSUE	KH	MM
REV	DATE	BY	DESCRIPTION	CHK	APP

DRAWING STATUS: **FINAL**



WSP House, 70 Chancery Lane, London, WC2A 1AF, UK,
T+ 44 (0) 020 7314 5000
wsp.com

CLIENT:



PROJECT:
AQUIND Interconnector

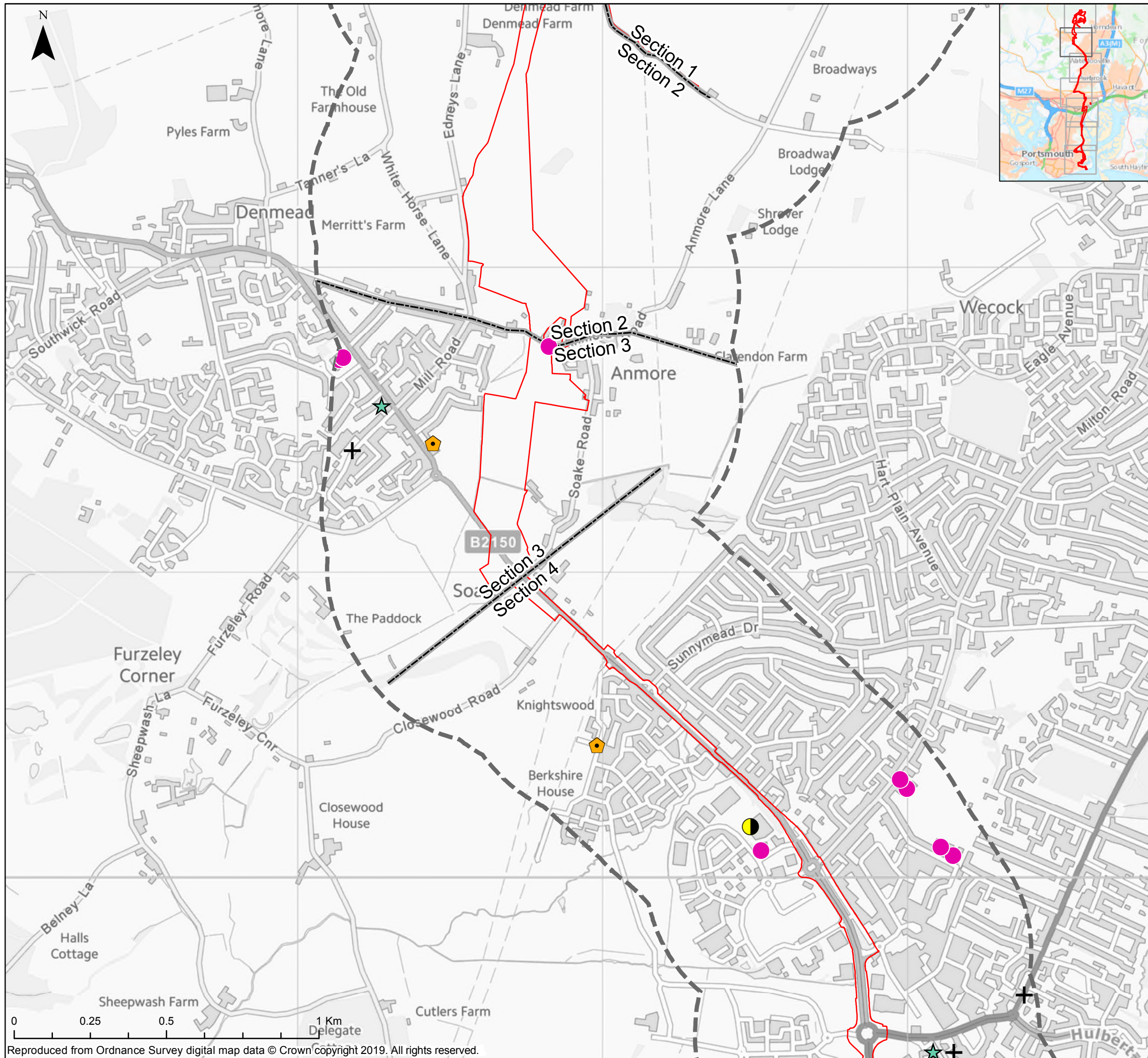
TITLE:
**Low Resolution - Figure 25.1
Socio-Economic Receptors within 500 m of the
Proposed Development
Sheet 1 of 7**

SCALE AT A3 1:12,500	CHECKED: KH	APPROVED: MM
-------------------------	----------------	-----------------

PROJECT NO: EN020022	DESIGNED: JT	DRAWN: JT	DATE: 11/11/2019
-------------------------	-----------------	--------------	---------------------

DRAWING NO: EN020022-ES-25.1-Sheet1	REV.NO: 01
---	----------------------

© WSP UK Ltd



Key

- Order Limits
- Cable Corridor Sections
- Order Limits 500m Buffer

Community Receptors

- Ambulance Station
- ◆ GP/ Health Facility
- Care Home
- Hospital
- Cemetery
- Leisure Facilities
- + Church
- ▲ Library
- ★ Dentist
- Children's/ Education Facility
- ★ Fire Station
- Tourist Facility (Location)
- Tourist Facility (Area)

The Infrastructure Planning (Applications: Prescribed Forms and Procedures) Regulations 2017 – Regulation 5(2)(a)

01	11/11/2019	JT	FIRST ISSUE	KH	MM
REV	DATE	BY	DESCRIPTION	CHK	APP

DRAWING STATUS: **FINAL**

WSP House, 70 Chancery Lane, London, WC2A 1AF, UK,
T+ 44 (0) 020 7314 5000
wsp.com

CLIENT:

PROJECT:
AQUIND Interconnector

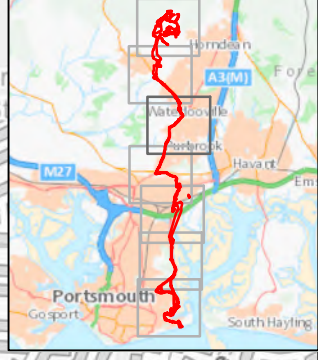
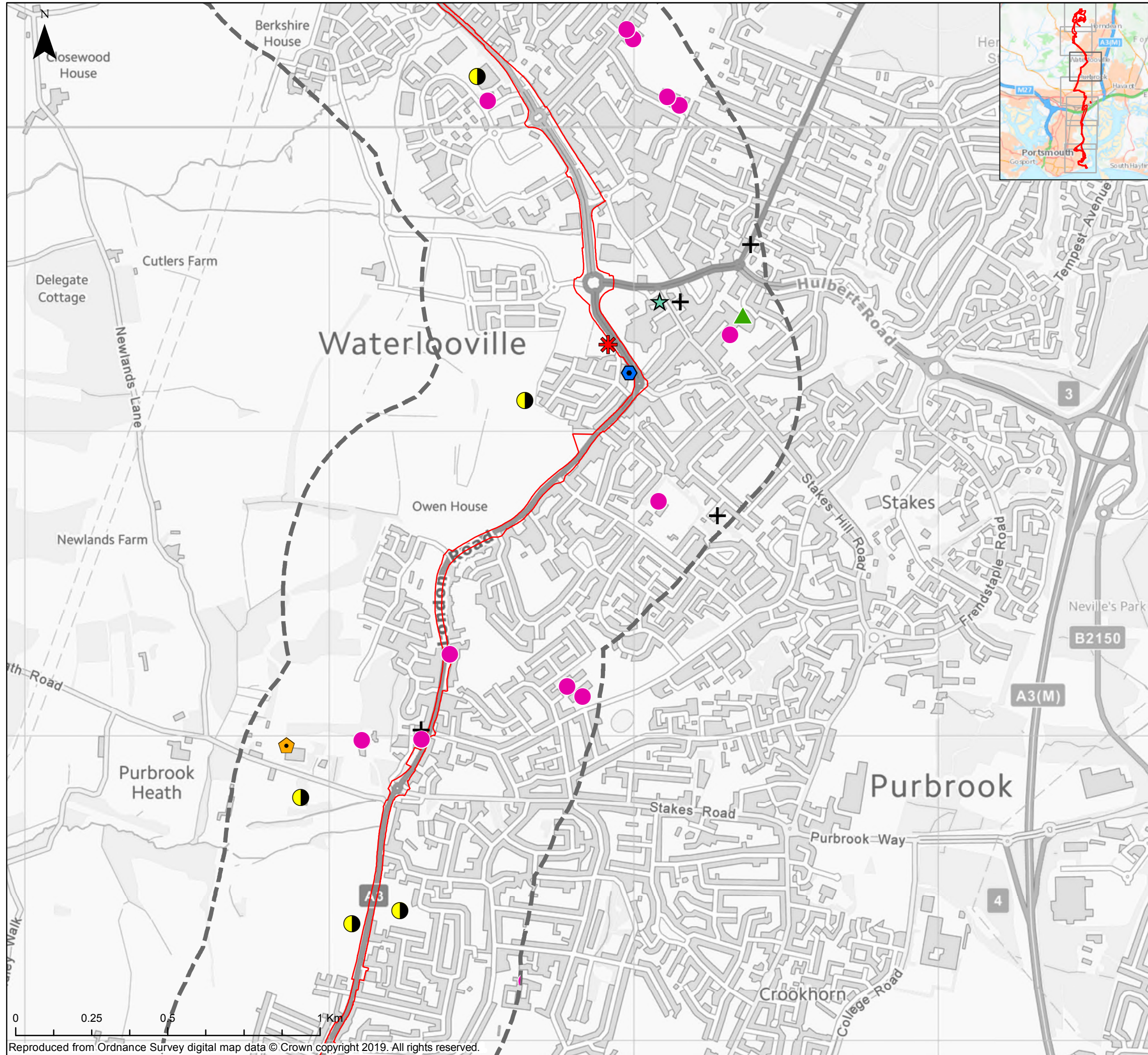
TITLE:
**Low Resolution - Figure 25.1
Socio-Economic Receptors within 500 m of the
Proposed Development
Sheet 2 of 7**

SCALE AT A3 1:12,500	CHECKED: KH	APPROVED: MM	
PROJECT NO: EN020022	DESIGNED: JT	DRAWN: JT	DATE: 11/11/2019

DRAWING NO: **EN020022-ES-25.1-Sheet2** REV.NO: **01**

© WSP UK Ltd

Reproduced from Ordnance Survey digital map data © Crown Copyright 2019. All rights reserved.



Key

- Order Limits
- Cable Corridor Sections
- Order Limits 500m Buffer

Community Receptors

- ⊙ Ambulance Station
- ⬢ GP/ Health Facility
- ⬢ Care Home
- Hospital
- ⊕ Cemetery
- Leisure Facilities
- + Church
- ▲ Library
- ★ Dentist
- Children's/ Education Facility
- ✱ Fire Station
- Tourist Facility (Location)
- Tourist Facility (Area)

The Infrastructure Planning (Applications: Prescribed Forms and Procedures) Regulations 2017 – Regulation 5(2)(a)

01	11/11/2019	JT	FIRST ISSUE	KH	MM
REV	DATE	BY	DESCRIPTION	CHK	APP

DRAWING STATUS: **FINAL**

WSP House, 70 Chancery Lane, London, WC2A 1AF, UK,
T+ 44 (0) 020 7314 5000
wsp.com

CLIENT:

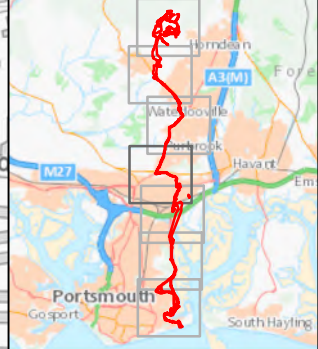
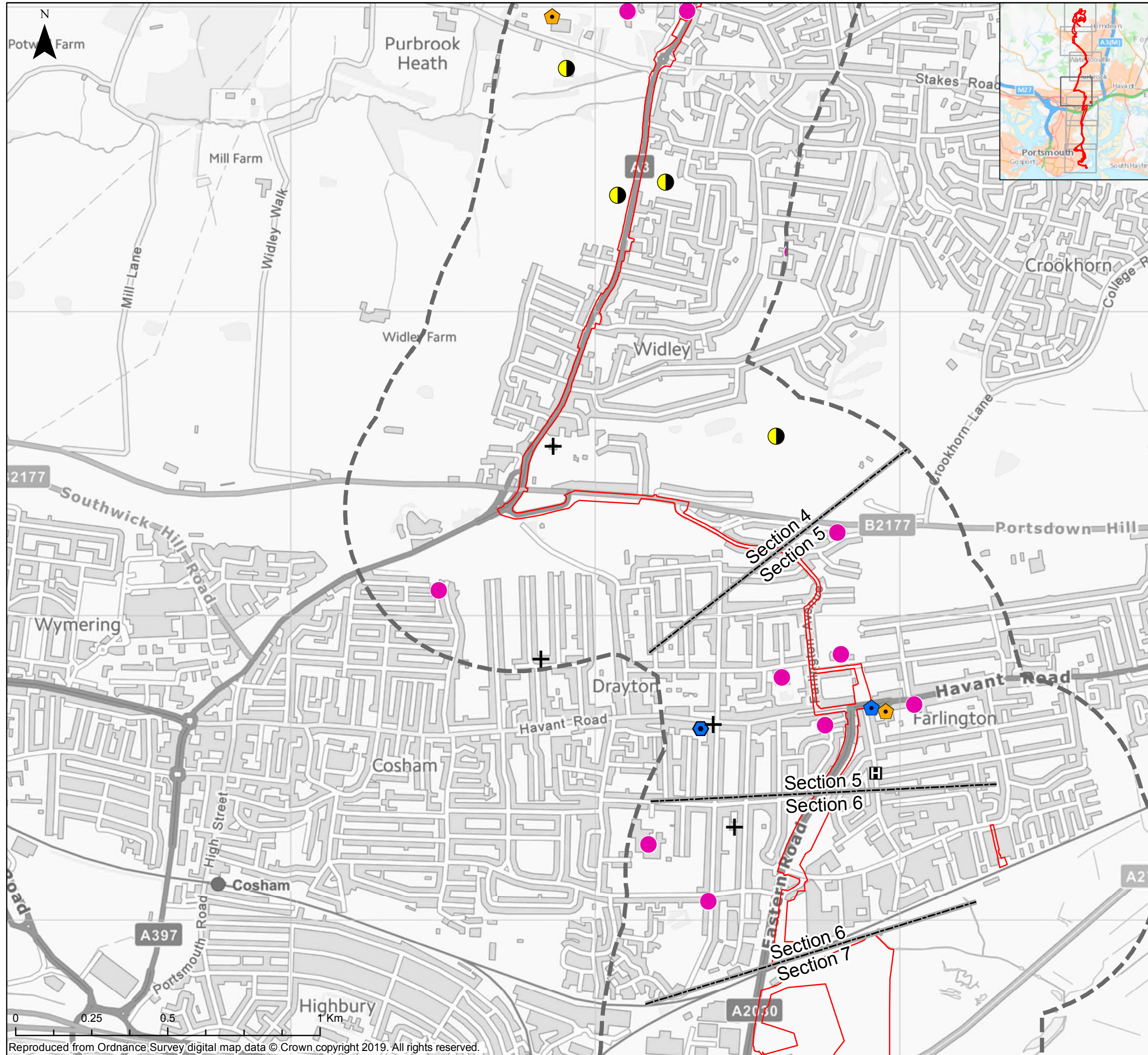
PROJECT: **AQUIND Interconnector**

TITLE: **Low Resolution - Figure 25.1
Socio-Economic Receptors within 500 m of the
Proposed Development
Sheet 3 of 7**

SCALE AT A3 1:12,500	CHECKED: KH	APPROVED: MM
PROJECT NO: EN020022	DESIGNED: JT	DRAWN: JT
DRAWING NO: EN020022-ES-25.1-Sheet3		REV.NO: 01

© WSP UK Ltd

Reproduced from Ordnance Survey digital map data © Crown copyright 2019. All rights reserved.



Key

- Order Limits
- Cable Corridor Sections
- Order Limits 500m Buffer

Community Receptors

- ⊙ Ambulance Station
- ⬠ GP/ Health Facility
- ⬠ Care Home
- ⬠ Hospital
- ⊕ Cemetery
- ⬠ Leisure Facilities
- + Church
- ▲ Library
- ★ Dentist
- Children's/ Education Facility
- ✱ Fire Station
- Tourist Facility (Location)
- Tourist Facility (Area)

The Infrastructure Planning (Applications: Prescribed Forms and Procedures) Regulations 2017 – Regulation 5(2)(a)

01	11/11/2019	JT	FIRST ISSUE	KH	MM
REV	DATE	BY	DESCRIPTION	CHK	APP

DRAWING STATUS: **FINAL**

WSP House, 70 Chancery Lane, London, WC2A 1AF, UK,
T+ 44 (0) 020 7314 5000
wsp.com

CLIENT:

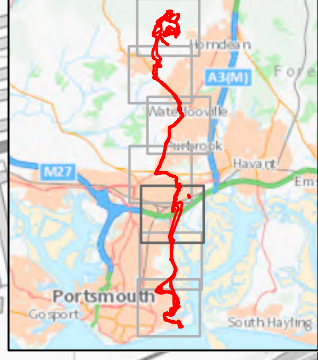
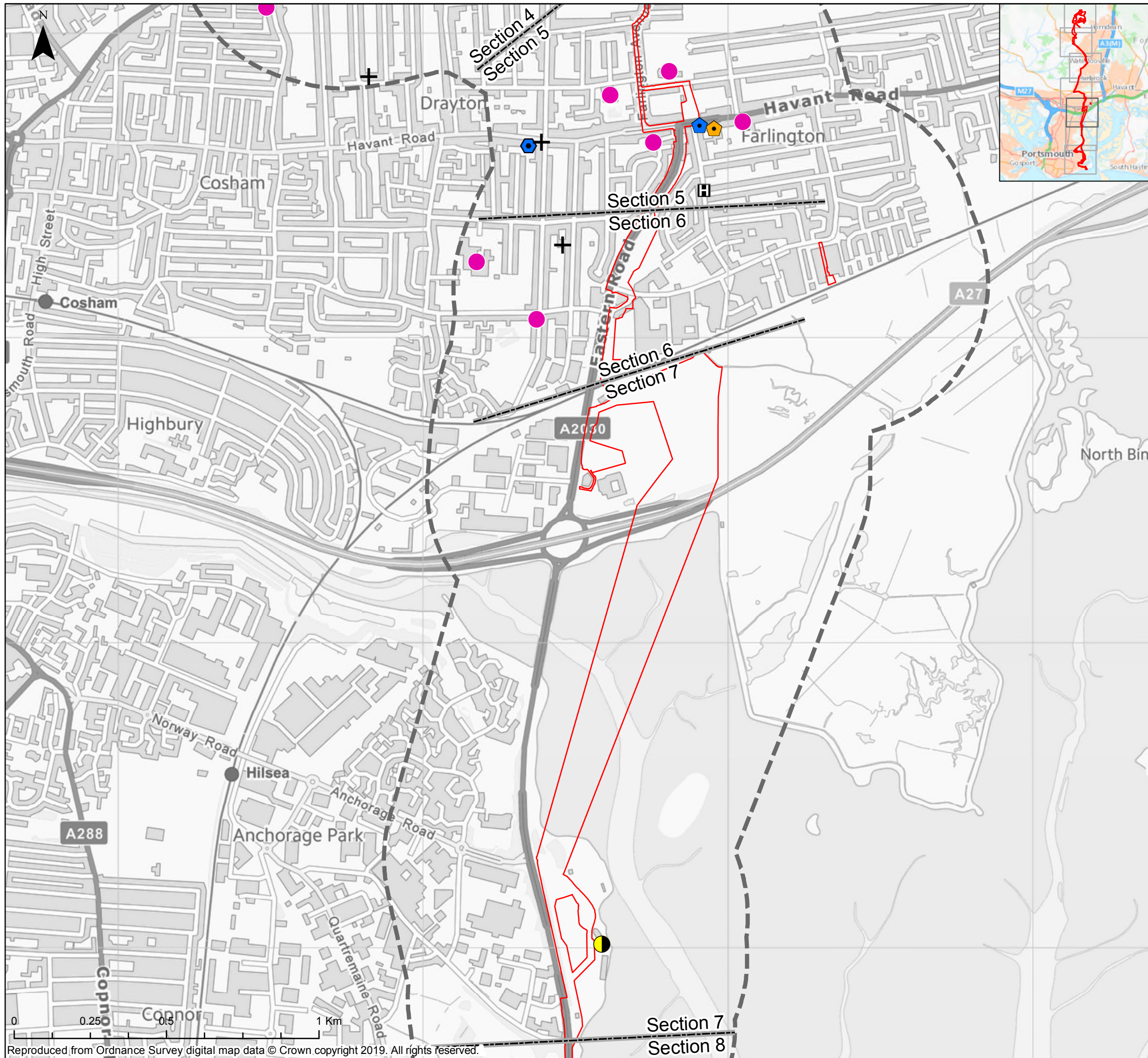
PROJECT:
AQUIND Interconnector

TITLE:
**Low Resolution - Figure 25.1
Socio-Economic Receptors within 500 m of the
Proposed Development
Sheet 4 of 7**

SCALE AT A3 1:12,500	CHECKED: KH	APPROVED: MM
PROJECT NO: EN020022	DESIGNED: JT	DRAWN: JT
DRAWING NO: EN020022-ES-25.1-Sheet4		REV.NO: 01

© WSP UK Ltd

Reproduced from Ordnance Survey digital map data © Crown copyright 2019. All rights reserved.



Key

- Order Limits
- Cable Corridor Sections
- Order Limits 500m Buffer

Community Receptors

- ⊕ Ambulance Station
- ⬢ GP/ Health Facility
- ⬢ Care Home
- H Hospital
- ⊕ Cemetery
- Leisure Facilities
- + Church
- ▲ Library
- ★ Dentist
- Children's/ Education Facility
- ✱ Fire Station
- ⊠ Tourist Facility (Location)
- ⊡ Tourist Facility (Area)

The Infrastructure Planning (Applications: Prescribed Forms and Procedures) Regulations 2017 – Regulation 5(2)(a)

REV	DATE	BY	DESCRIPTION	CHK	APP
01	11/11/2019	JT	FIRST ISSUE	KH	MM

DRAWING STATUS: **FINAL**

WSP House, 70 Chancery Lane, London, WC2A 1AF, UK,
T+ 44 (0) 020 7314 5000
wsp.com

CLIENT:

PROJECT:

AQUIND Interconnector

TITLE:

Low Resolution - Figure 25.1
Socio-Economic Receptors within 500 m of the
Proposed Development
Sheet 5 of 7

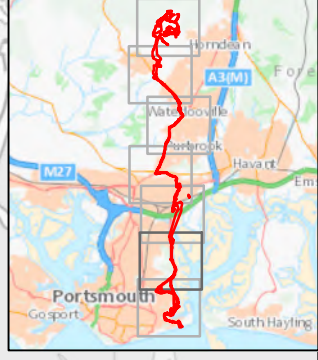
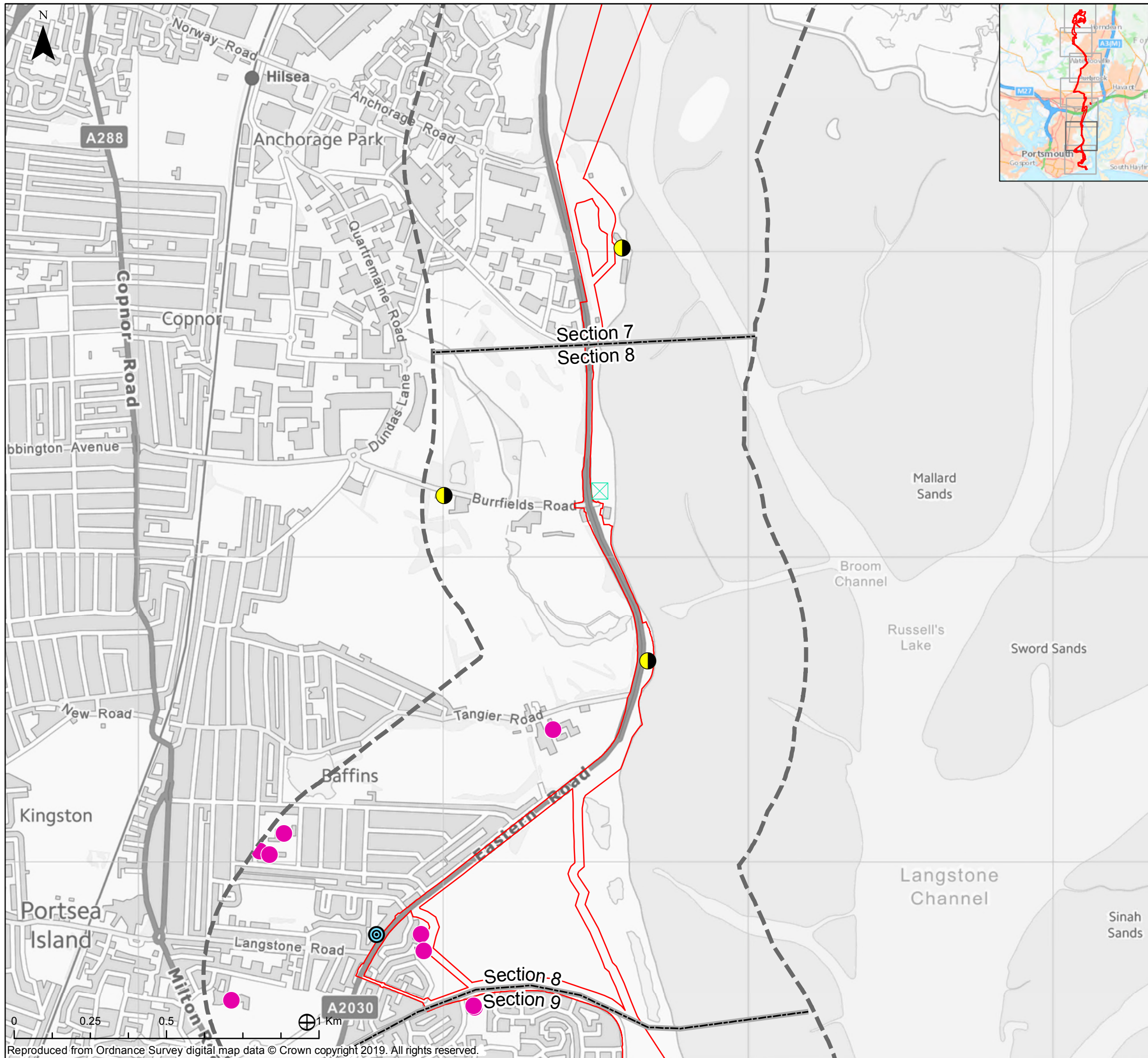
SCALE AT A3 1:12,500	CHECKED: KH	APPROVED: MM
-------------------------	----------------	-----------------

PROJECT NO: EN020022	DESIGNED: JT	DRAWN: JT	DATE: 11/11/2019
-------------------------	-----------------	--------------	---------------------

DRAWING NO: EN020022-ES-25.1-Sheet5	REV.NO: 01
---	----------------------

© WSP UK Ltd

Reproduced from Ordnance Survey digital map data © Crown copyright 2019. All rights reserved.



Key

- Order Limits
- Cable Corridor Sections
- Order Limits 500m Buffer

Community Receptors

- Ⓜ GP/ Health Facility
- Ⓜ Hospital
- 🏠 Care Home
- Ⓜ Leisure Facilities
- Ⓜ Cemetery
- Ⓜ Library
- ✝ Church
- ★ Children's/ Education Facility
- ★ Dentist
- ★ Fire Station
- Ⓜ Tourist Facility (Location)
- Ⓜ Tourist Facility (Area)

The Infrastructure Planning (Applications: Prescribed Forms and Procedures) Regulations 2017 – Regulation 5(2)(a)

01	11/11/2019	JT	FIRST ISSUE	KH	MM
REV	DATE	BY	DESCRIPTION	CHK	APP

DRAWING STATUS: **FINAL**

WSP House, 70 Chancery Lane, London, WC2A 1AF, UK,
T+ 44 (0) 020 7314 5000
wsp.com

CLIENT:

PROJECT:
AQUIND Interconnector

TITLE:
**Low Resolution - Figure 25.1
Socio-Economic Receptors within 500 m of the
Proposed Development
Sheet 6 of 7**

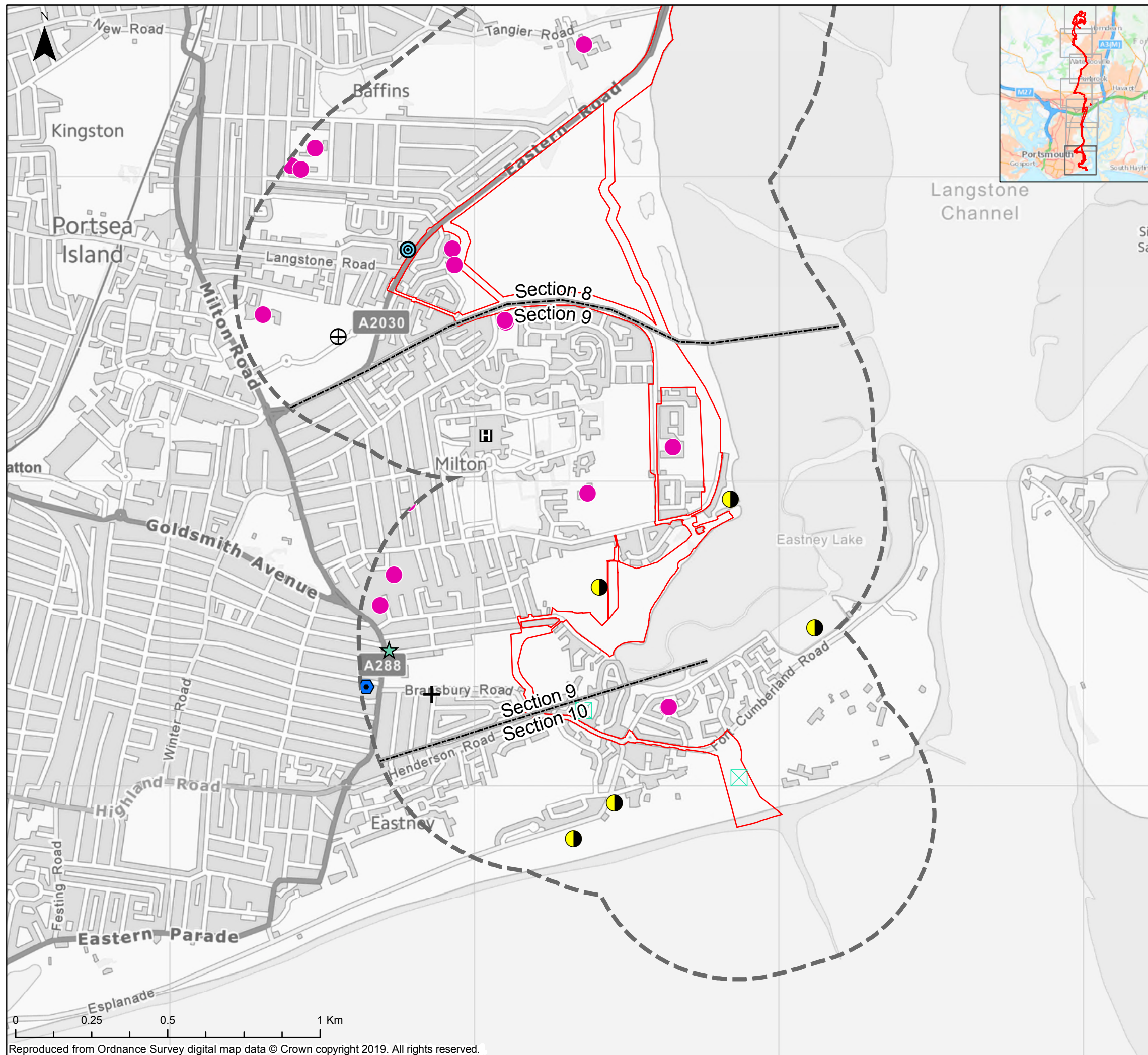
SCALE AT A3 1:12,500	CHECKED: KH	APPROVED: MM
-------------------------	----------------	-----------------

PROJECT NO: EN020022	DESIGNED: JT	DRAWN: JT	DATE: 11/11/2019
-------------------------	-----------------	--------------	---------------------

DRAWING NO: EN020022-ES-25.1-Sheet6	REV.NO: 01
---	----------------------

© WSP UK Ltd

Reproduced from Ordnance Survey digital map data © Crown copyright 2019. All rights reserved.



Key

- Order Limits
- Cable Corridor Sections
- Order Limits 500m Buffer

Community Receptors

- 📍 Ambulance Station
- 🏠 GP/ Health Facility
- 🏠 Care Home
- 🏥 Hospital
- ⊕ Cemetery
- 🎡 Leisure Facilities
- ✝ Church
- 📖 Library
- 🌟 Dentist
- 👧 Children's/ Education Facility
- 🔥 Fire Station
- 🏠 Tourist Facility (Location)
- 🏠 Tourist Facility (Area)

The Infrastructure Planning (Applications: Prescribed Forms and Procedures) Regulations 2017 – Regulation 5(2)(a)

REV	DATE	BY	DESCRIPTION	CHK	APP
01	11/11/2019	JT	FIRST ISSUE	KH	MM

DRAWING STATUS: **FINAL**

WSP House, 70 Chancery Lane, London, WC2A 1AF, UK,
T+ 44 (0) 020 7314 5000
wsp.com

CLIENT:

PROJECT:
AQUIND Interconnector

TITLE:
**Low Resolution - Figure 25.1
Socio-Economic Receptors within 500 m of the
Proposed Development
Sheet 7 of 7**

SCALE AT A3 1:12,500	CHECKED: KH	APPROVED: MM
-------------------------	----------------	-----------------

PROJECT NO: EN020022	DESIGNED: JT	DRAWN: JT	DATE: 11/11/2019
-------------------------	-----------------	--------------	---------------------

DRAWING NO: EN020022-ES-25.1-Sheet7	REV.NO: 01
---	----------------------

© WSP UK Ltd

Reproduced from Ordnance Survey digital map data © Crown copyright 2019. All rights reserved.